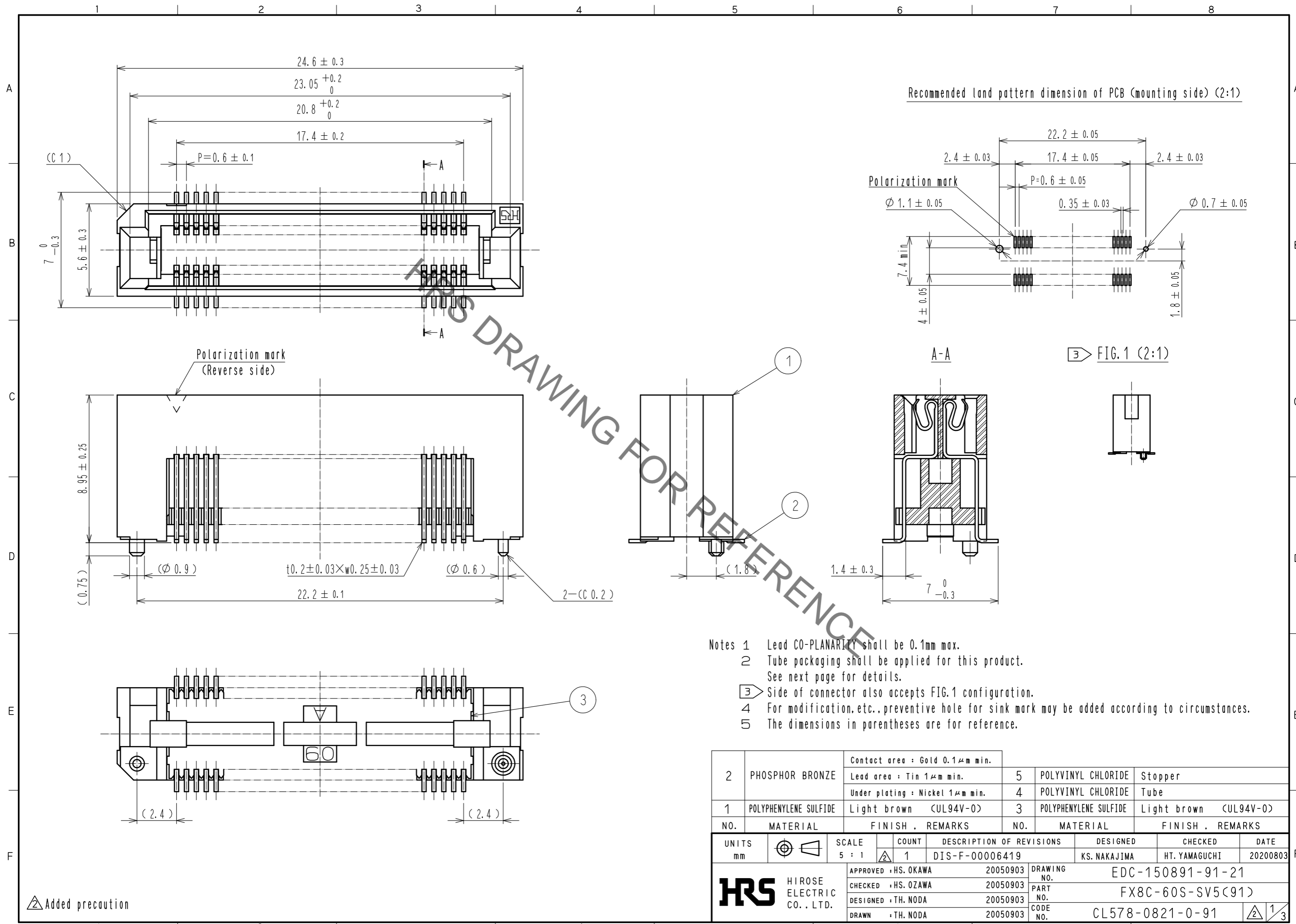


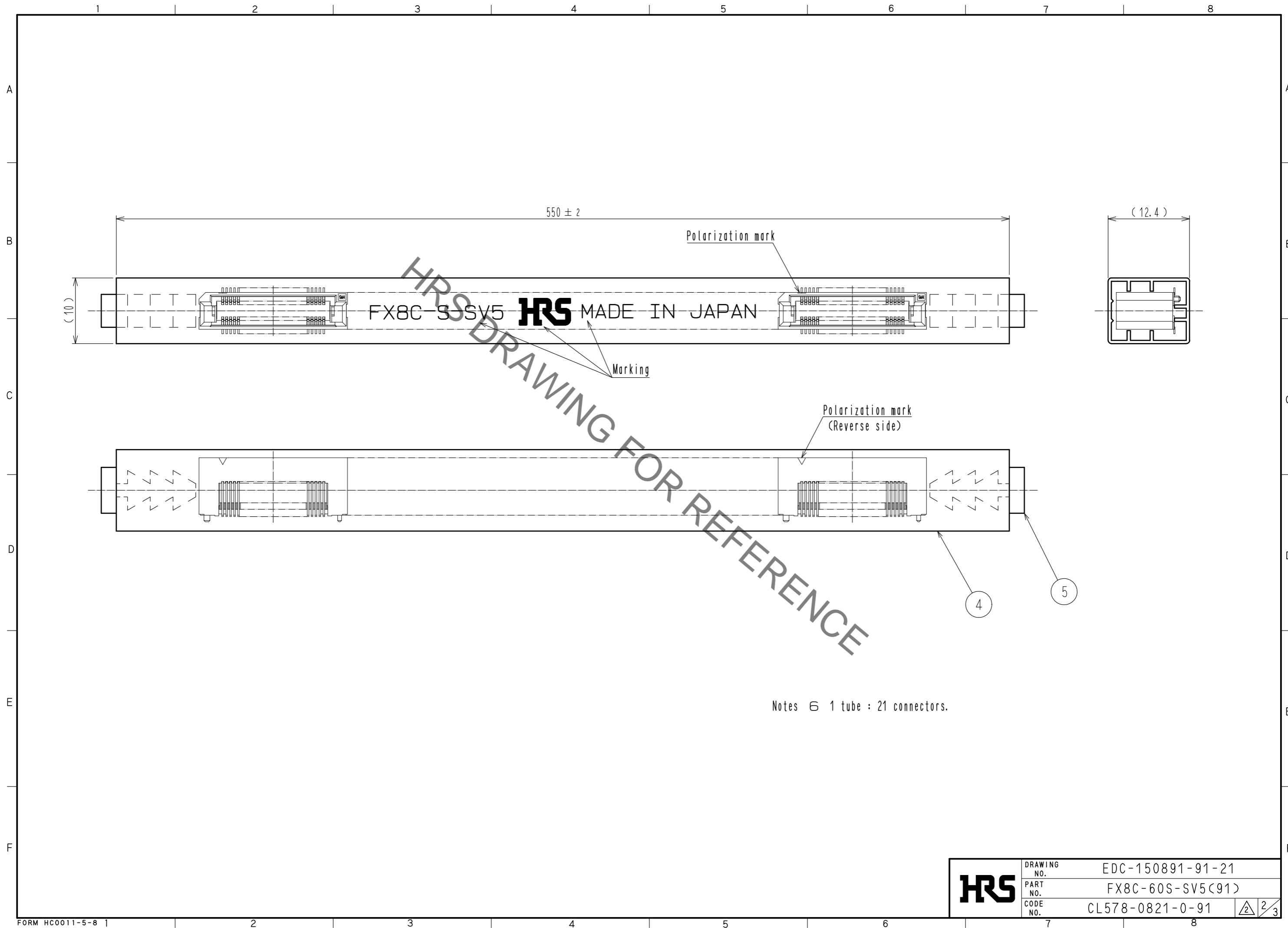
Sep.1.2020 Copyright 2020 HIROSE ELECTRIC CO., LTD. All Rights Reserved.
In case of consideration for using Automotive equipment / device which demand high reliability, kindly contact our sales window correspondents.



2	PHOSPHOR BRONZE	Contact area : Gold 0.1μm min.	5	POLYVINYL CHLORIDE	Stopper				
		Lead area : Tin 1μm min.			4	POLYVINYL CHLORIDE	Tube		
		Under plating : Nickel 1μm min.			3	POLYPHENYLENE SULFIDE	Light brown (UL94V-0)		
1	POLYPHENYLENE SULFIDE	Light brown (UL94V-0)							
NO.	MATERIAL	FINISH . REMARKS	NO.	MATERIAL	FINISH . REMARKS				
UNITS	mm	SCALE	5 : 1	COUNT	1	DESCRIPTION OF REVISIONS	DESIGNED	CHECKED	DATE
						DIS-F-00006419	KS. NAKAJIMA	HT. YAMAGUCHI	20200803
HRS HIROSE ELECTRIC CO., LTD.		APPROVED : HS. OKAWA	20050903	DRAWING NO.		EDC-150891-91-21			
		CHECKED : HS. OZAWA	20050903	PART NO.		FX8C-60S-SV5(91)			
		DESIGNED : TH. NODA	20050903	CODE NO.		CL578-0821-0-91			
		DRAWN : TH. NODA	20050903						

Added precaution

Sep.1.2020 Copyright 2020 HIROSE ELECTRIC CO., LTD. All Rights Reserved.
In case of consideration for using Automotive equipment / device which demand high reliability, kindly contact our sales window correspondents.



Notes ⑥ 1 tube : 21 connectors.

HRS	DRAWING NO.	EDC-150891-91-21
	PART NO.	FX8C-60S-SV5(91)
	CODE NO.	CL578-0821-0-91

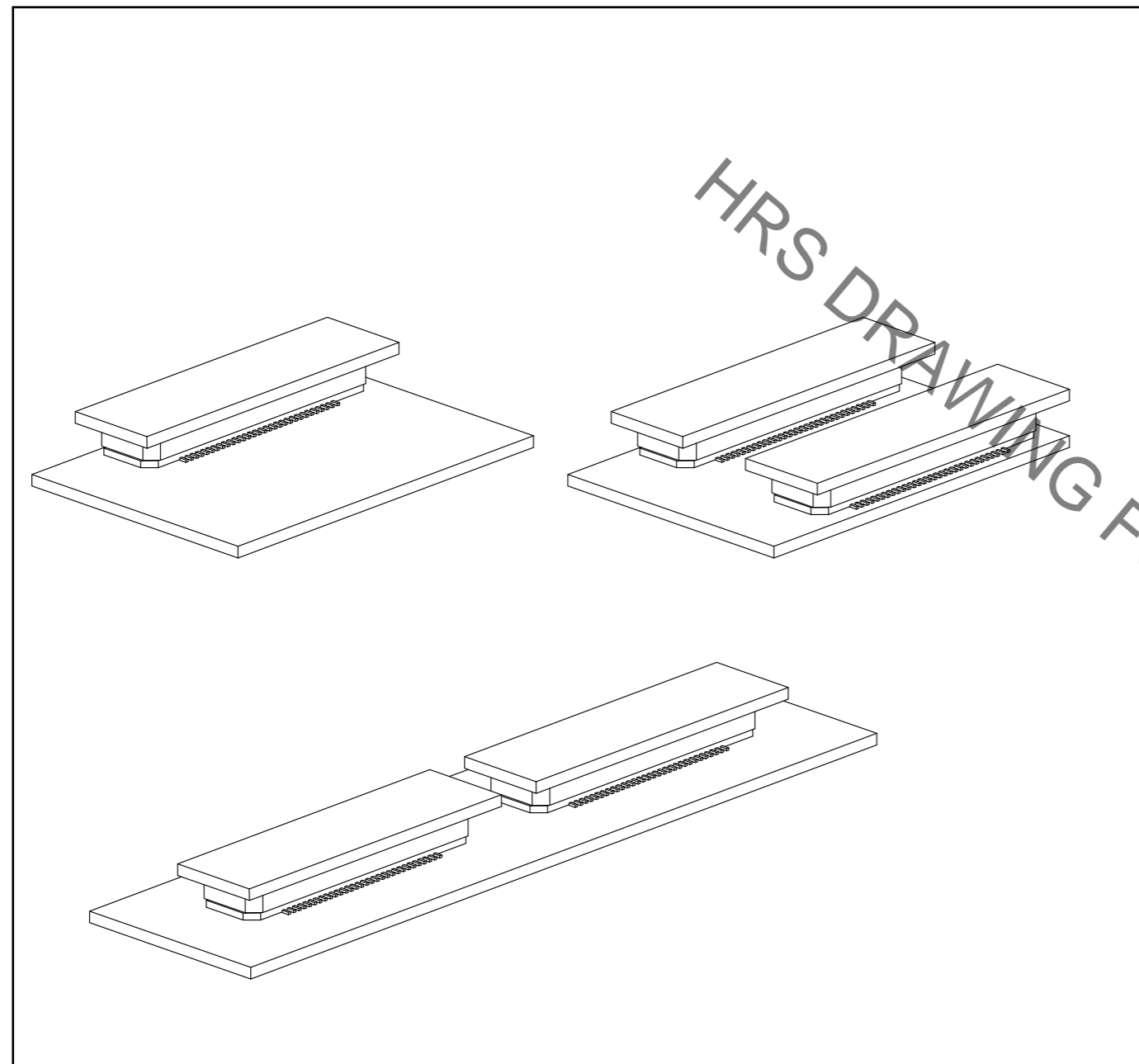
2/3

Sep.1.2020 Copyright 2020 HIROSE ELECTRIC CO., LTD. All Rights Reserved.
In case of consideration for using Automotive equipment / device which demand high reliability, kindly contact our sales window correspondents.

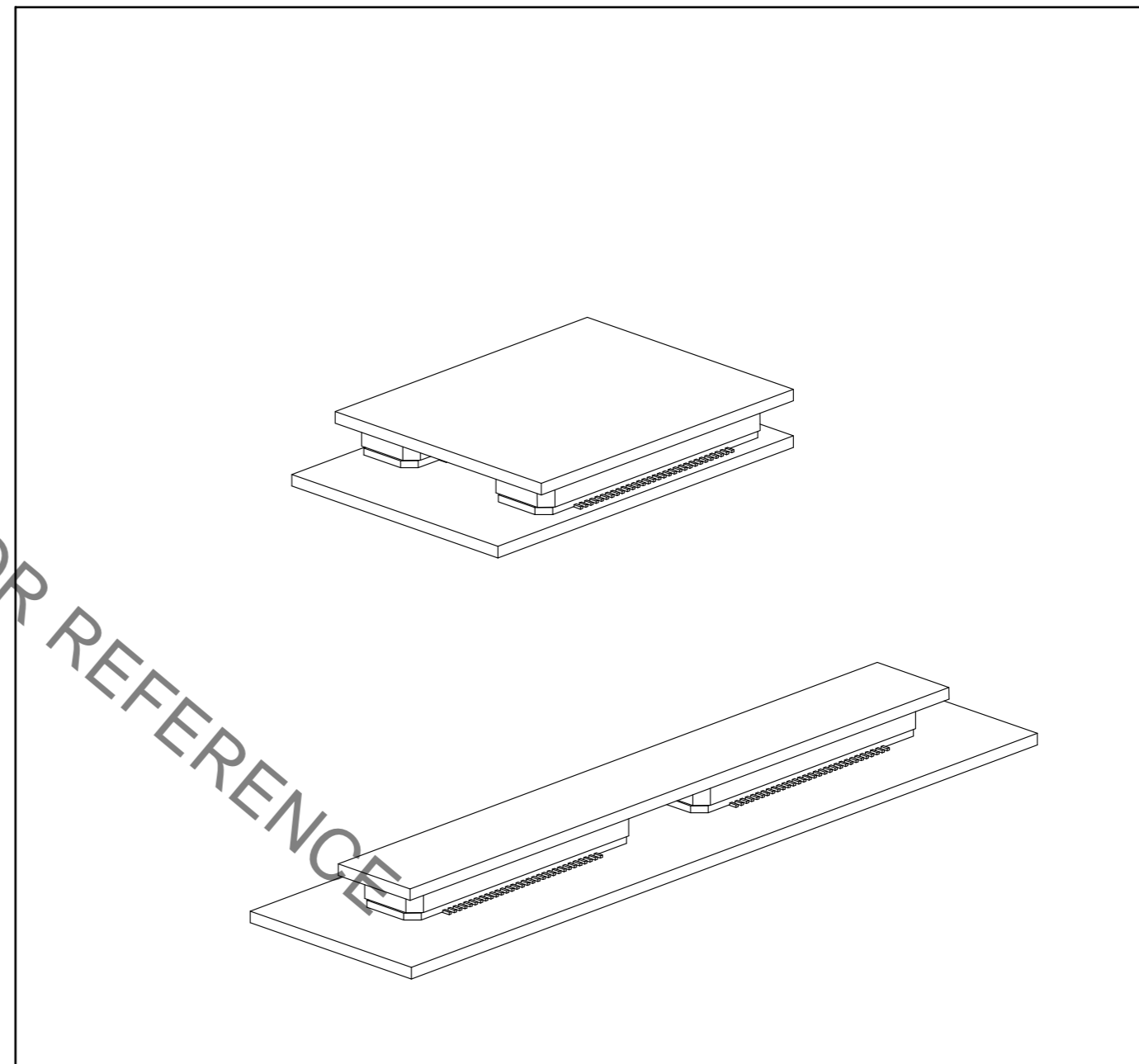
【使用上の注意】

コネクタが複数個実装された基板同士の嵌合は、コネクタ破損、変形が発生しますので、片側の基板を分割した状態でご使用ください。

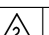
OK



NG



HRS DRAWING FOR REFERENCE

HRS	DRAWING NO.	EDC-150891-91-21
	PART NO.	FX8C-60S-SV5(91)
	CODE NO.	CL578-0821-0-91
		 3/3